

LC1 LENSES FOR CREE XR-E LEDs



- Specially designed for Cree XLAMP XR-E series of LEDs.
- Special care taken to make a uniform white or warm white illumination. Lenses work well with other colors, too.
- Lens material optical grade PMMA. Allows use of high current and temperature conditions
- Best available optical efficiency, more than 90%, with an extremely good cutoff of light
- Fastening of holden to PCB with appropriate adhesive, e.c. epoxy or polyurethane based. NOTE: DO NOT USE SUPERGLUE.

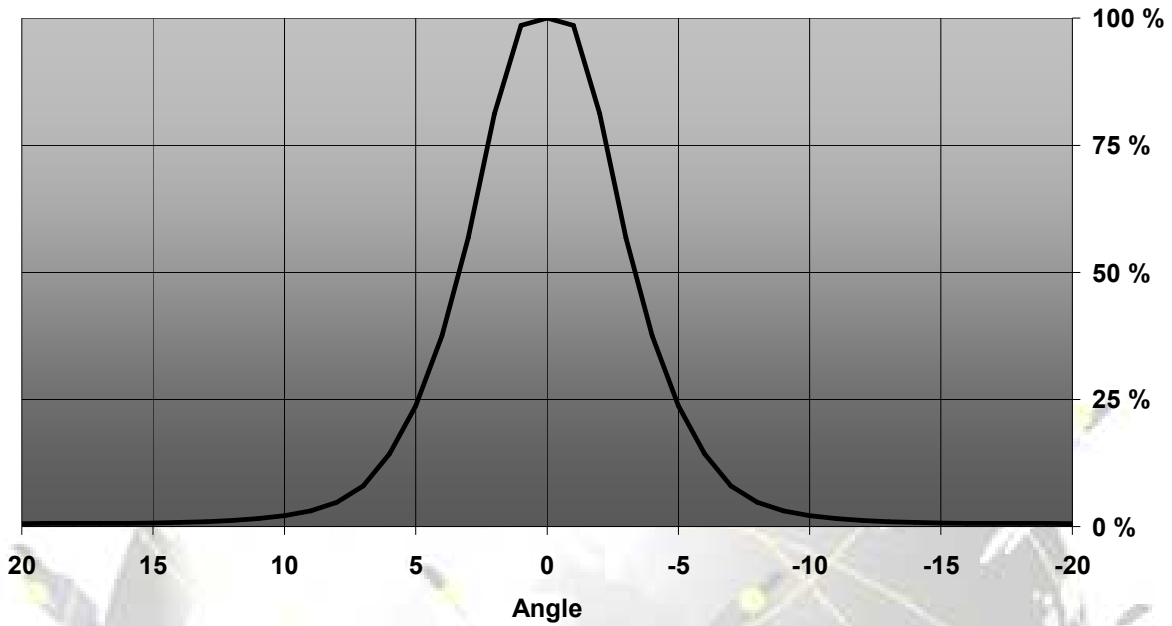
LENS TYPES

NAME	ORDERING CODE	FWHM Angle
LC1 REAL SPOT	LC1-RS (n. 10454)	±3°
LC1 DIFFUSER	LC1-D (n. F10627)	±9.8°
LC1 MEDIUM	LC1-M (n. 10453)	±14°
LC1 RECTANGULAR	LC1-REC (n. 10511)	±21° x ±11°

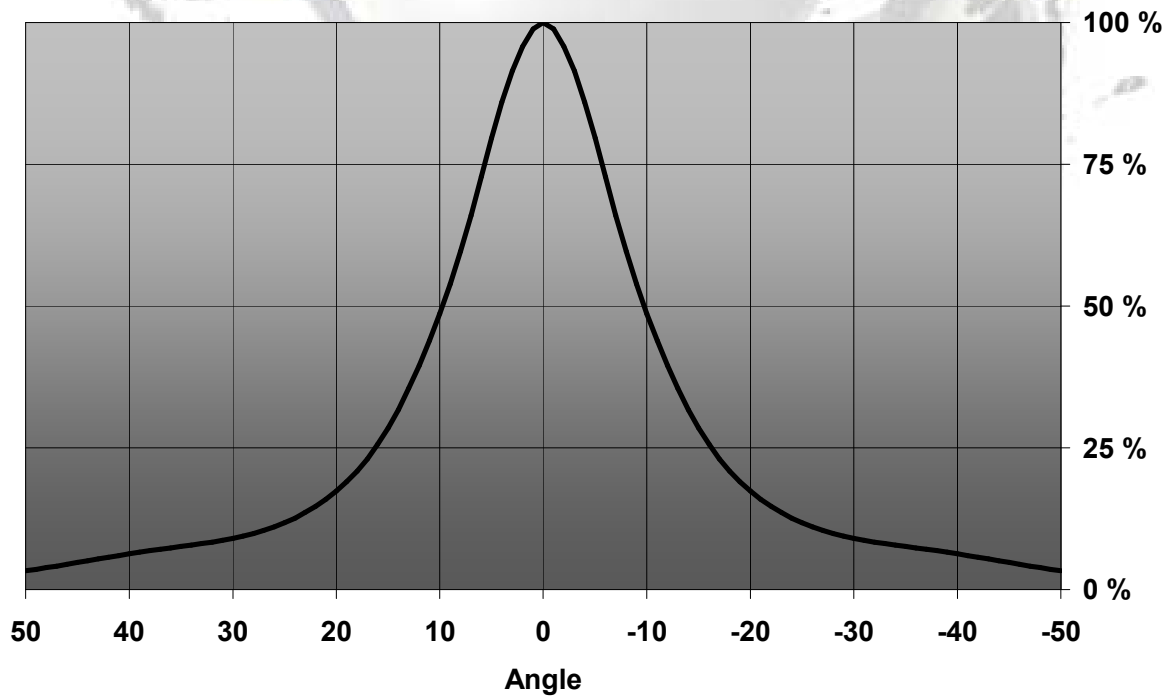
© Ledil Oy – PRELIMINARY - Subject to change without prior notice

MEASUREMENT DATA

Relative Intensity LC1-RS

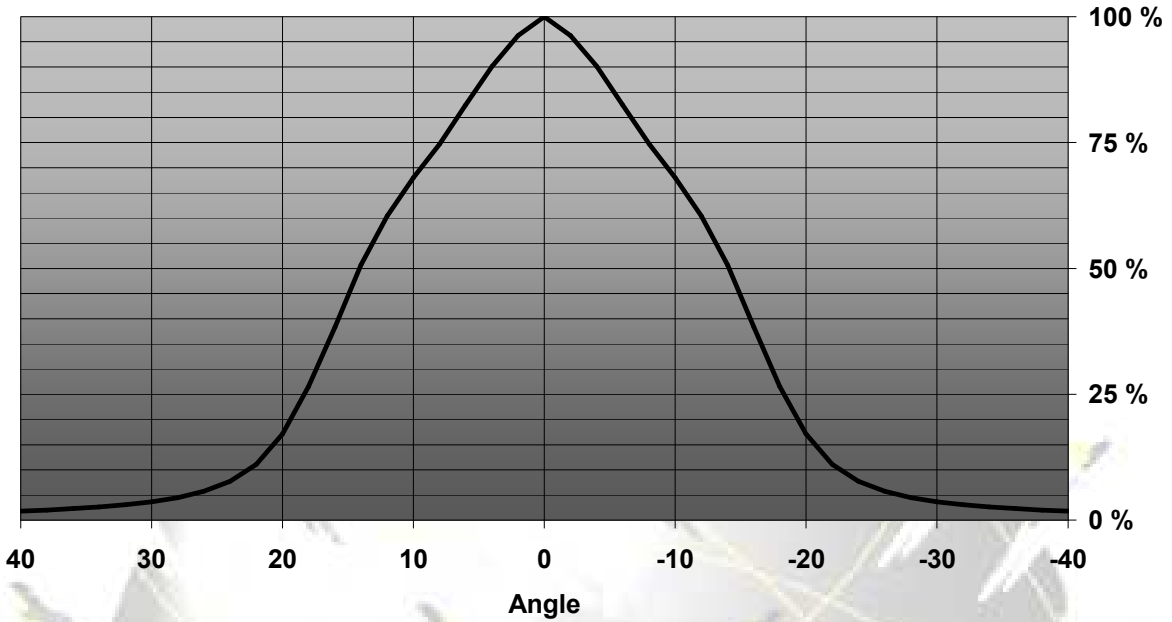


Relative Intensity of LC1-D (n.F10627)

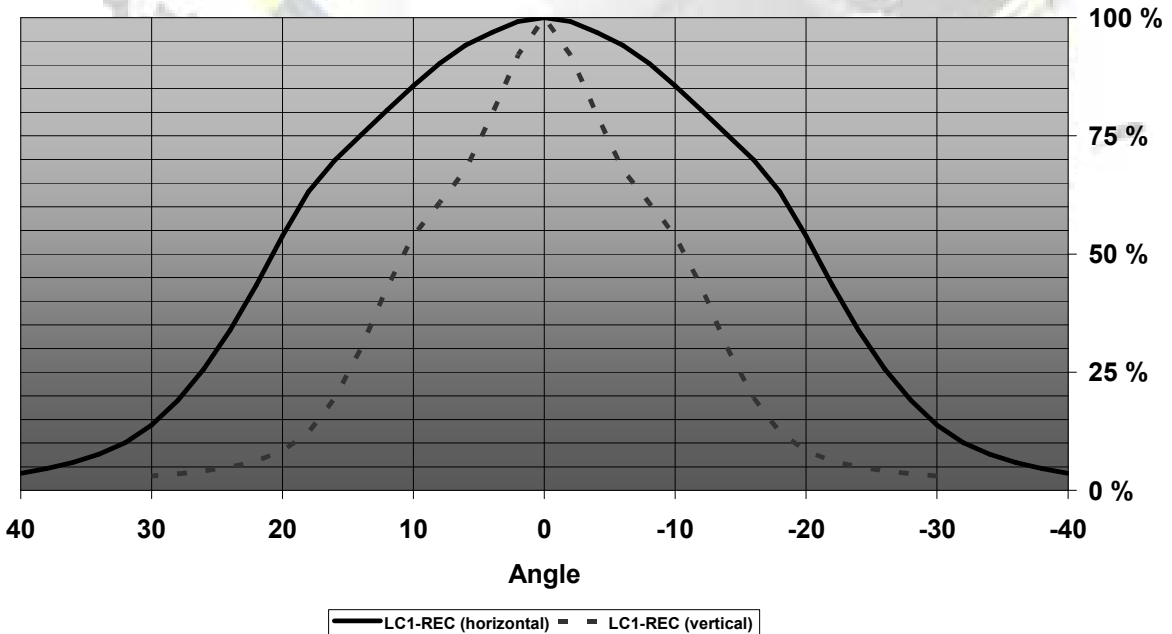


© Ledil Oy – PRELIMINARY - Subject to change without prior notice

Relative Intensity of LC1-M



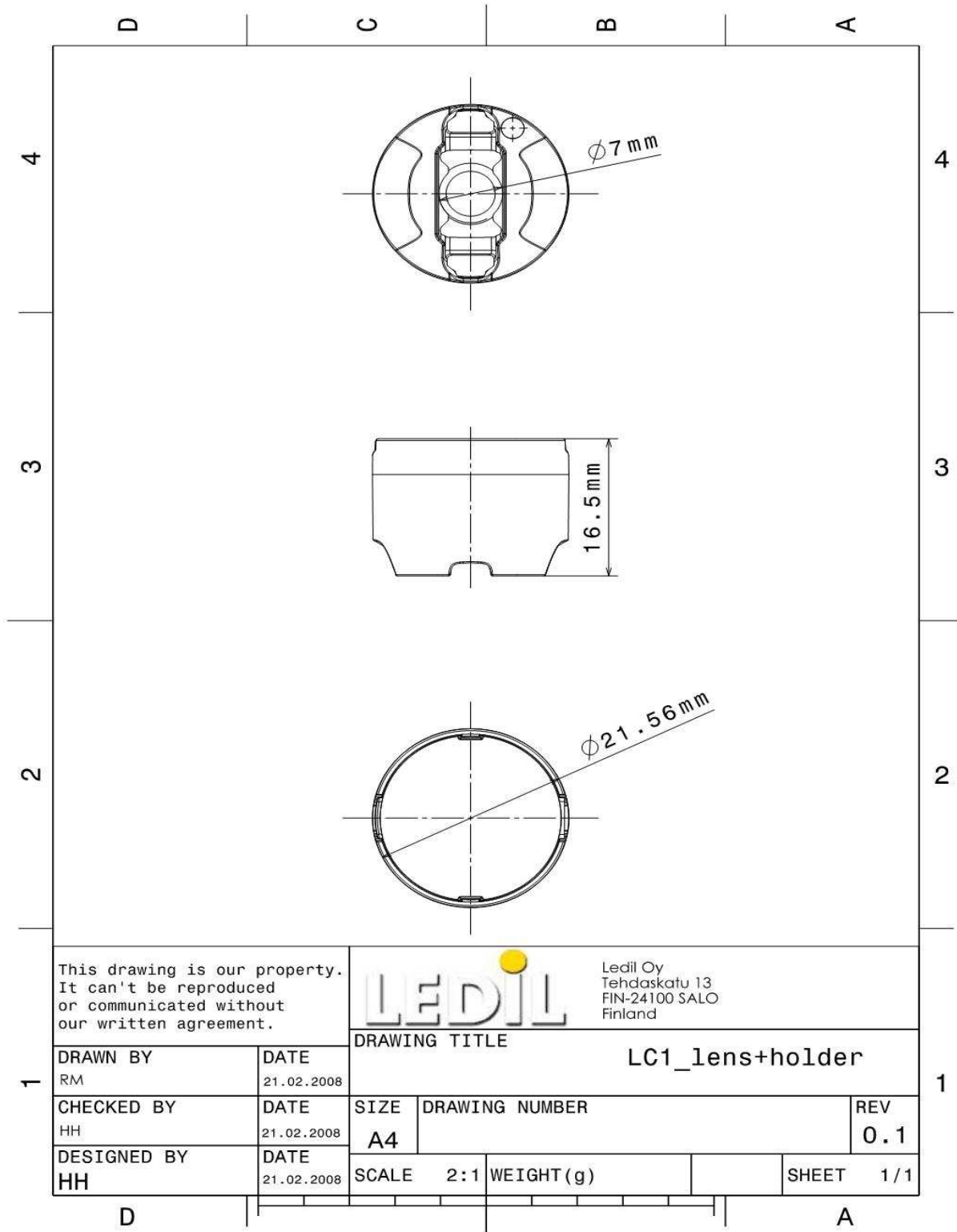
Relative Intensity of LC1-REC



EULUMDAT & IES FILES AVAILABLE BY REQUEST

© Ledil Oy – PRELIMINARY - Subject to change without prior notice

DRAWINGS



© Ledil Oy - PRELIMINARY - Subject to change without prior notice