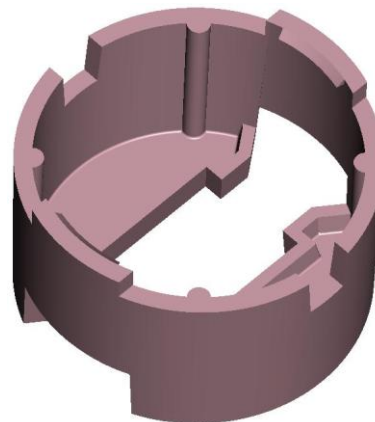


CREE XR[®], XR-E[®] & XR-C[®] 20mm range

| Part No. | Description | White XR | | | Red/Amber XR | | | Cyan/Green XR | | | White XR-E | | | White XR-C | | |
|----------|------------------------|----------|-----|-------|--------------|-----|-------|---------------|-----|-------|------------|-----|-------|------------|-----|-------|
| | | FWHM# | EFF | Cd/lm | FWHM# | EFF | Cd/lm | FWHM# | EFF | Cd/lm | FWHM# | EFF | Cd/lm | FWHM# | EFF | Cd/lm |
| 10199 | Tight | 13 | 87% | 6.7 | 13 | 91% | 19 | 10 | 90% | 0 | 8.4 | 91% | 31 | 5.3 | 89% | 49 |
| 10200 | Narrow Frosted | 16 | 87% | 5.6 | 14 | 91% | 15 | 12 | 90% | 0 | 10 | 90% | 17 | 9.6 | 86% | 19 |
| 10201 | Medium Frosted | 23 | 87% | 2.8 | 21 | 89% | 5.3 | 22 | 89% | 0 | 20 | 89% | 4.2 | 18 | 84% | 4.4 |
| 10202 | Wide Frosted | 0 | 0 | 0 | 0 | 0 | 0 | 0 | 0 | 0 | 0 | 0 | 0 | 0 | 0 | 0 |
| 10203 | Elliptical | 39 x 16 | 85% | 3.2 | 37 x 14 | 90% | 4.7 | 40 x 13 | 89% | 0 | 41 x 10 | 90% | 5.1 | 41 x 8.4 | 84% | 7.1 |
| 10204 | Elliptical Orthogonal* | 16 x 39 | 85% | 3.2 | 14 x 37 | 90% | 4.7 | 13 x 40 | 89% | 0 | 10 x 41 | 90% | 5.1 | 8.4 x 41 | 84% | 7.1 |
| 10210 | Medium Ripple | 25 | 89% | 3.0 | 16 | 90% | 7.7 | 15 | 90% | 0 | 16 | 88% | 6.9 | 12 | 87% | 9.5 |
| 10211 | Wide Ripple | 0 | 0 | 0 | 0 | 0 | 0 | 0 | 0 | 0 | 0 | 0 | 0 | 0 | 0 | 0 |

*Orthogonal is the elliptical beam turned through 90deg.

#Full Width Half Maximum i.e. total viewing angle



| Part No. | Colour | Description |
|----------|--------|--------------------------|
| 10205 | Black | Cree XR, XRE, XRC Holder |
| 10206 | Clear | Cree XR, XRE, XRC Holder |
| 10207 | White | Cree XR, XRE, XRC Holder |



Carclo Technical Plastics (Slough)

17 May 2007

111 Buckingham Avenue, Slough, Berkshire SL1 4PF ENGLAND. Web: www.carclo-optics.com

e-mail: sales@carclo-optics.com Tel: 0044 (0) 1753 575011 Fax: 0044 (0) 1753 811359

