

## Features:

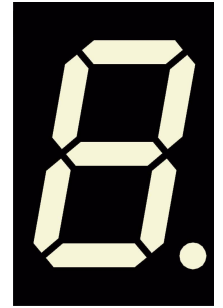
- Industry 1st white display technology
- Wide viewing angle
- Black face colour, White segment colour
- High segment intensity
- Consistent emission characteristics
- Aesthetically pleasing colour
- Ideal for broad range of applications

## Available options:

- Alternative face colour
- Alternative font
- Long terminal pins

## Font design

Product not shown  
actual size



## Electro / Optical Characteristics - $I_F$ W01 = 20 mA W05 = 10 mA $T_a = 25^\circ C$

Part Number Common Cathode	Part Number Common Anode	Emitting Colour	Chromaticity Coordinates		Forward Voltage $V_F$		Luminous Intensity $I_V$	
			x	y	typical	max	min	typical
FN1-0561W010SBW	FN1-0562W010SBW	White	0.30	0.30	3.80	4.50	-	8
FN1-0561W050SBW	FN1-0562W050SBW	White	0.30	0.30	3.70	4.00	-	17
Units					V		mcd / seg. (digit average)	

## Maximum Ratings $T_a = 25^\circ C$ - Derate above $25^\circ C$

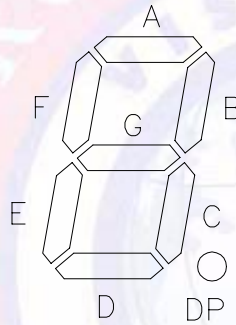
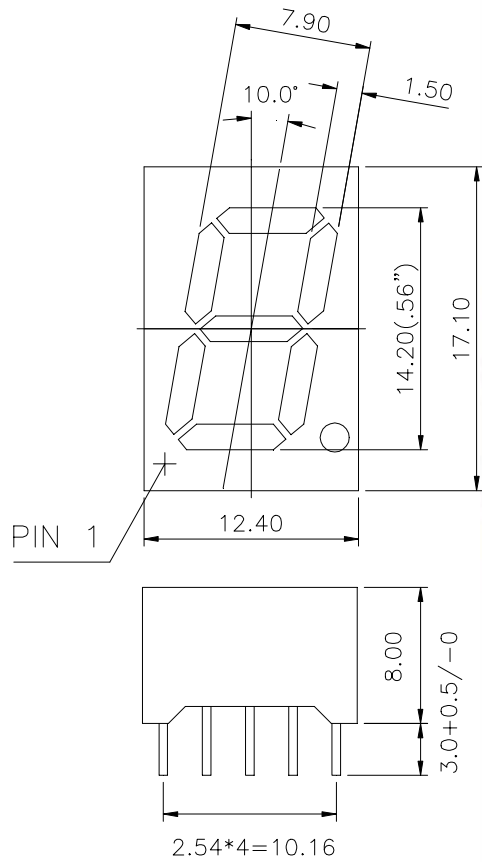
Characteristic	Condition	Symbol	Rating	Units
Pulse Forward Current	0.1 duty cycle @ 1KHz	W01	100	mA
		W05	35	
DC Forward Current		W01	20	mA
		W05	15	
Reverse Voltage	$I_R = 10 \mu A$	$V_R$	5	V
Operating Temperature		$T_{opr}$	- 25 to + 80	$^\circ C$
Storage Temperature		$T_{stg}$	- 30 to + 85	$^\circ C$
Lead soldering temperature	1.6 mm from body - max 3 seconds		260	$^\circ C$

## Note

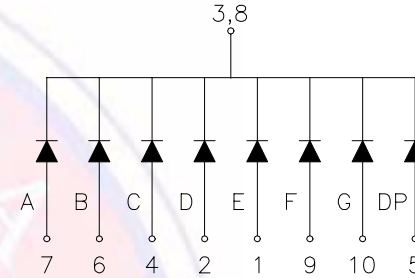
Chromaticity coordinates to  
CIE 1931 Standard.

Industry standard procedures  
regarding static must be observed  
when handling this product.

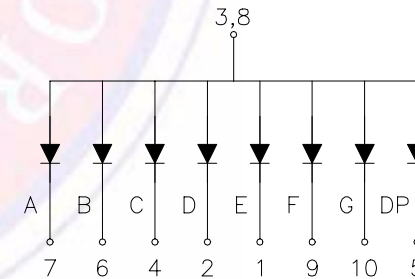
## Package Outline



## Common Cathode



## Common Anode



Tolerance  $\pm 0.25$  mm unless stated